



MADHUBAN HOMES

Amenities

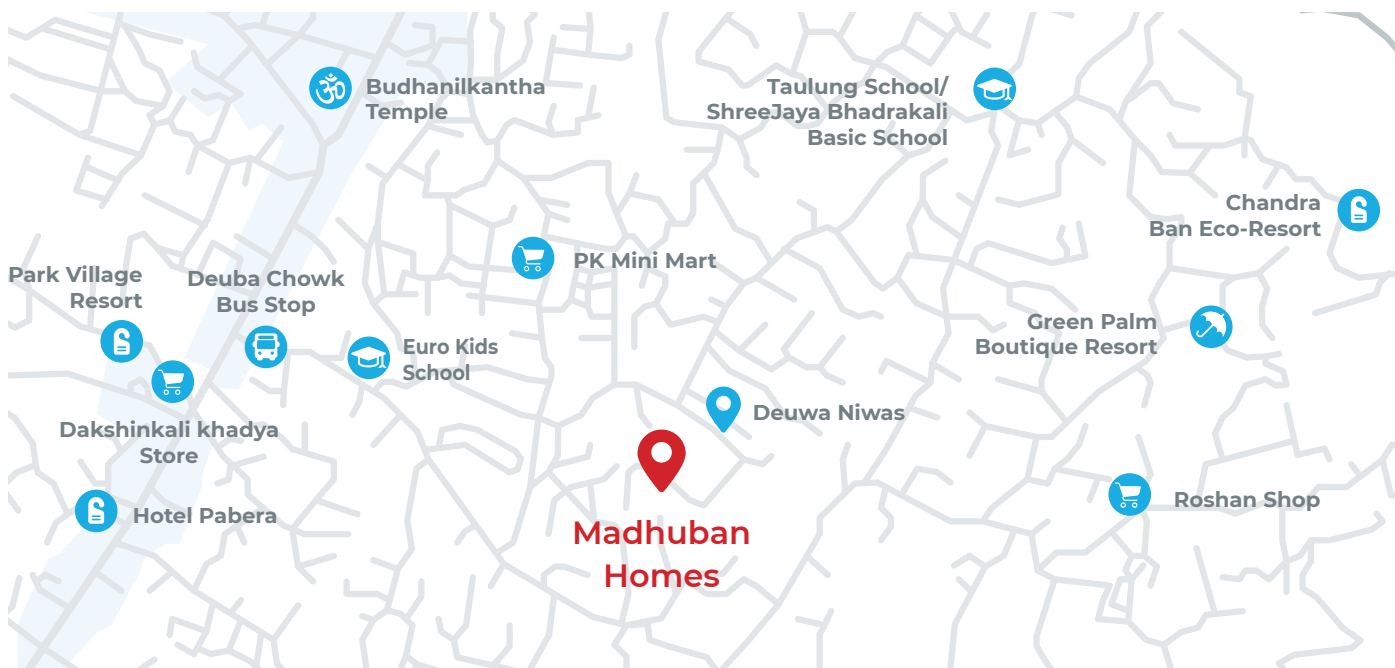
2

Our features:

 <p>High-Quality Materials And Fixtures</p>	 <p>Accessible And VIP Location</p>	Earthquake Resistance
Ample Parking	 <p>East Facing Homes With Ample Sunlight</p>	CCTV Surveillance And 24 Hours Security
Vastu Certified	Modern Design	Grid-Tied Solar-Power

Nearby Amenities:

27.773104, 85.366098



Bhatbateni Supermarket	5.8 KM	Euro School	3.7 KM
Chakrapath Ring Road	5.7 KM	Budhanilkantha School	2 KM
Gangalal Hospital	4.8 KM	Park Village Resort	1.2 KM
HAMS Hospital	6.3 KM	Euro Kids School	0.9 KM

Unit 1

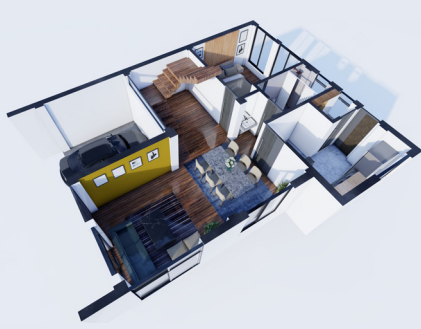
3

Built-Up Area

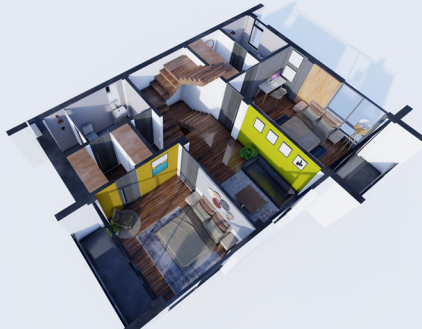
2,076 Sq. Ft.

Land Area

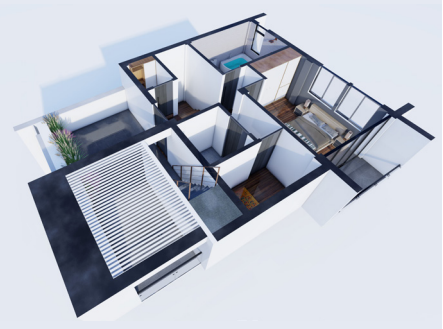
0 - 4 - 2 - 0



Ground Floor

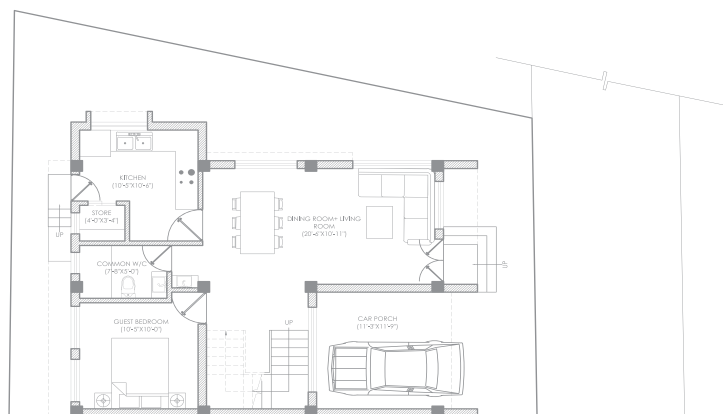


First Floor



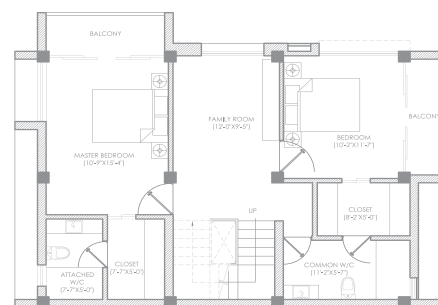
Top Floor

FLOOR PLANS



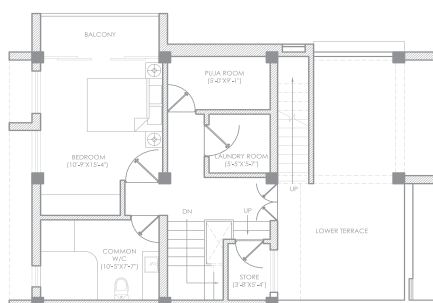
GROUND FLOOR PLAN

AREA: 720.93 SQ. FT



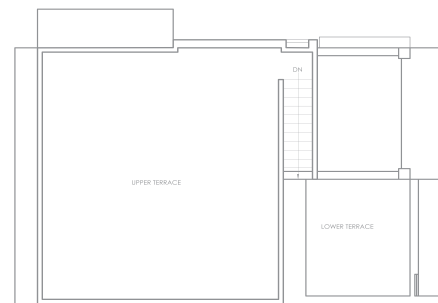
FIRST FLOOR PLAN

AREA: 819.38 SQ. FT



TOP FLOOR PLAN

AREA: 536.42 SQ. FT



ROOF PLAN

Unit 2

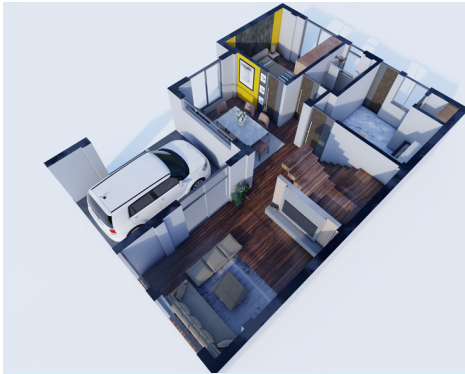
4

Built-Up Area

2,161 Sq. Ft.

Land Area

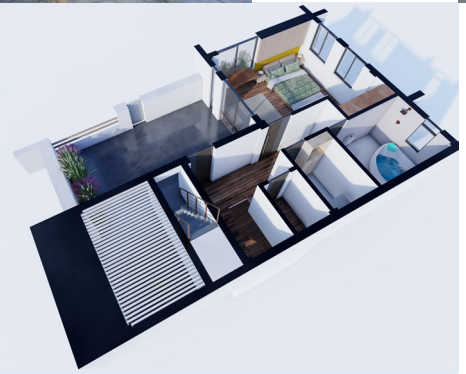
0 - 4 - 0 - 1



Ground Floor

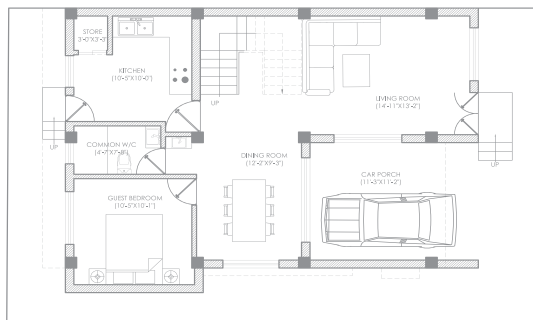


First Floor



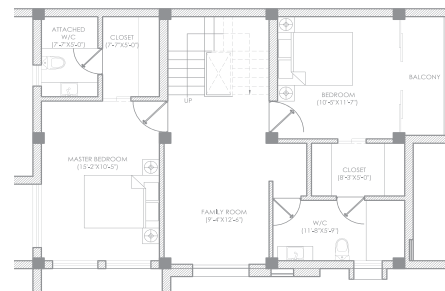
Top Floor

FLOOR PLANS



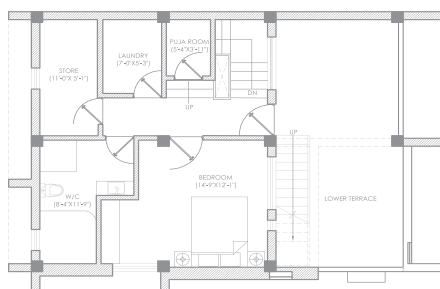
GROUND FLOOR PLAN

AREA: 763.37 SQ.FT



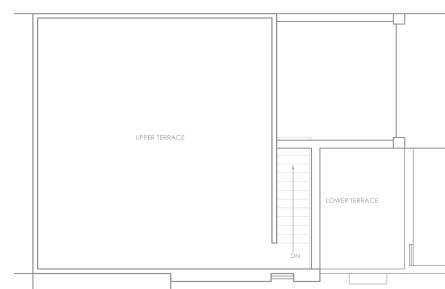
FIRST FLOOR PLAN

AREA: 845.18 SQ.FT



SECOND FLOOR PLAN

AREA: 553.04 SQ.FT



ROOF PLAN

Unit 3

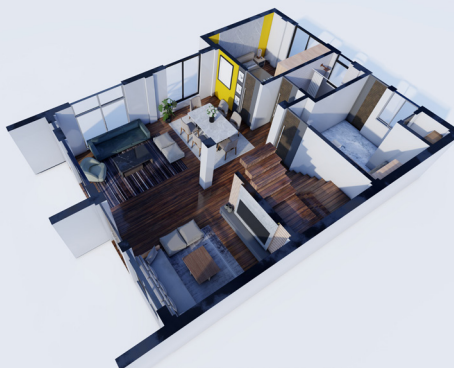
5

Built-Up Area

2,248 Sq. Ft.

Land Area

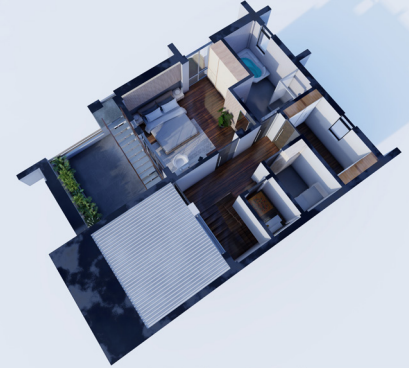
0 - 4 - 2 - 2



Ground Floor

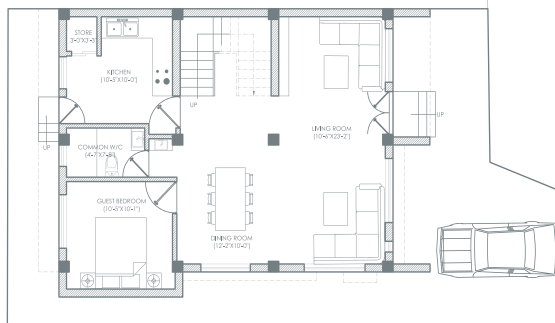


First Floor



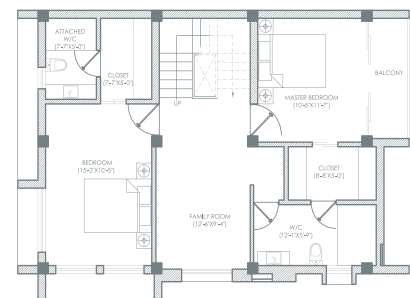
Top Floor

FLOOR PLANS



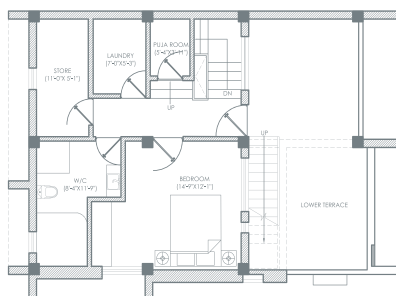
GROUND FLOOR PLAN

AREA: 847.41 SQ.FT



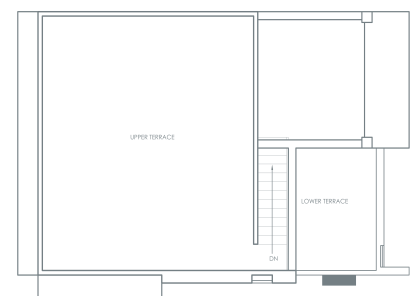
FIRST FLOOR PLAN

AREA: 847.96 SQ.FT



SECOND FLOOR PLAN

AREA: 552.97 SQ.FT



ROOF PLAN

Unit 4

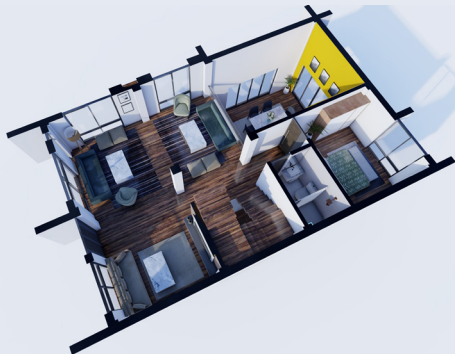
6

Built-Up Area

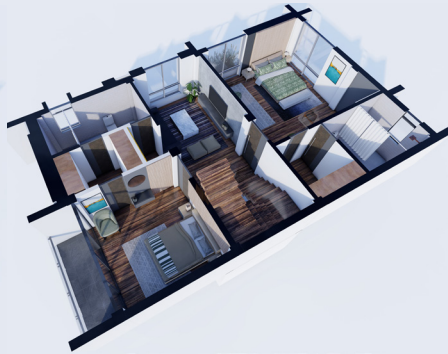
2,440 Sq. Ft.

Land Area

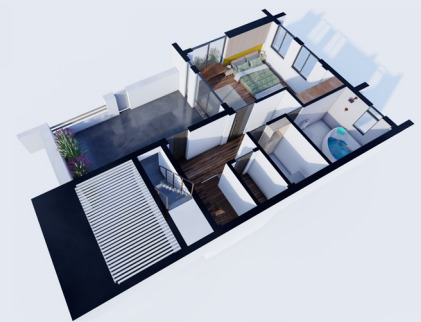
0 - 5 - 0 - 0



Ground Floor

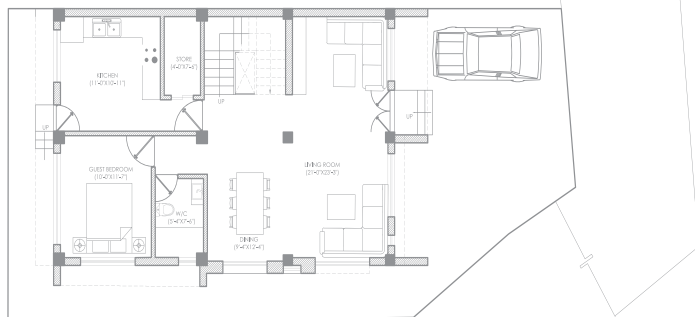


First Floor



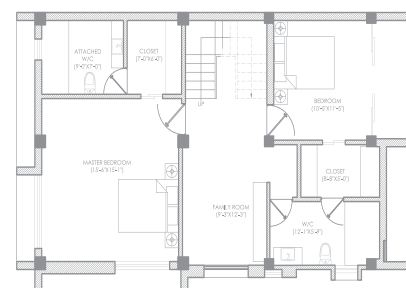
Top Floor

FLOOR PLANS



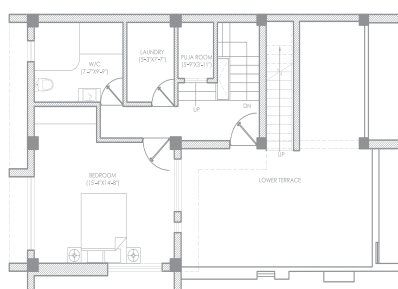
GROUND FLOOR PLAN

AREA: 937.41 SQ.FT



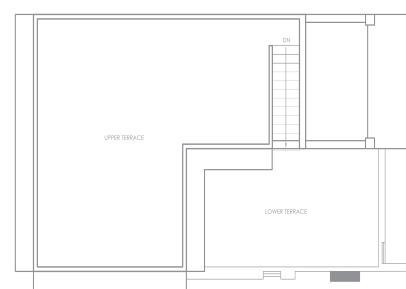
FIRST FLOOR PLAN

AREA: 958.17 SQ.FT



SECOND FLOOR PLAN

AREA: 543.55 SQ.FT



ROOF PLAN

Unit 5

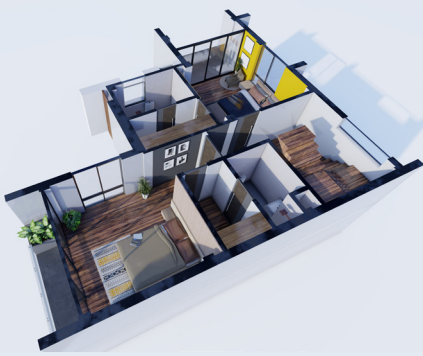
7

Built-Up Area

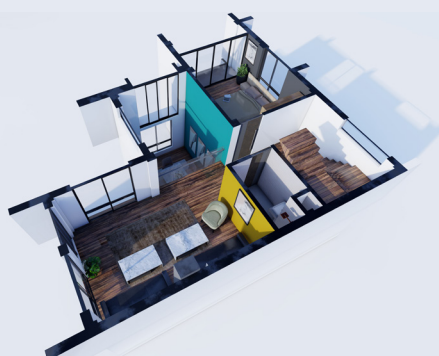
2,764 Sq. Ft.

Land Area

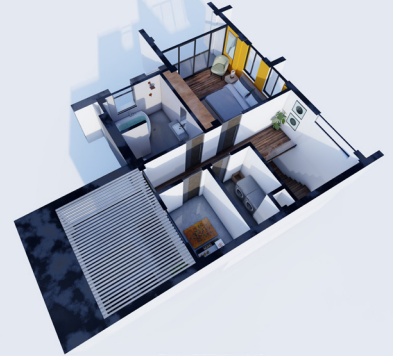
0 - 5 - 2 - 1



Ground Floor

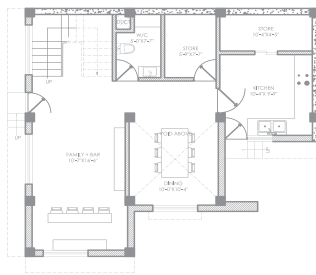


First Floor

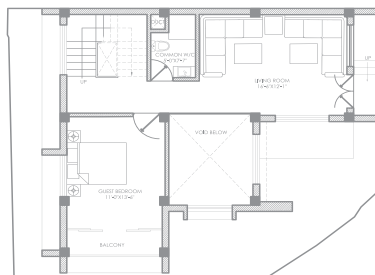


Top Floor

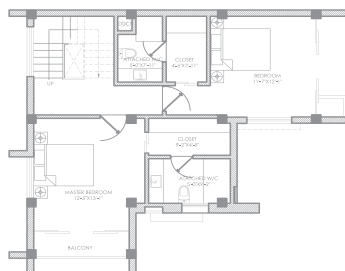
FLOOR PLANS



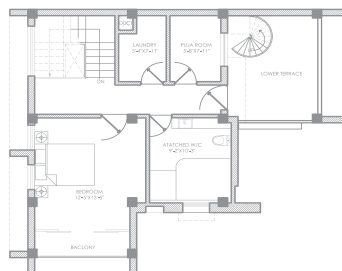
BASEMENT PLAN
AREA: 782.26 SQ.FT



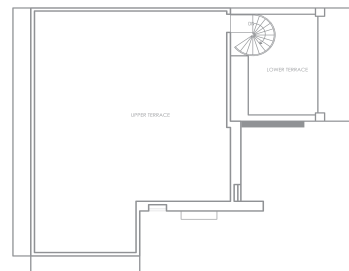
GROUND FLOOR PLAN
AREA: 635.38 SQ.FT



FIRST FLOOR PLAN
AREA: 745.85 SQ.FT



SECOND FLOOR PLAN
AREA: 602.47 SQ.FT



ROOF PLAN

About us

Next Properties Pvt. Ltd. is an emerging real estate development company in Nepal, currently dealing in housing projects in Budhanilkantha, Kathmandu. Since its inception, the company has been rigorously working on constructing houses with perfect settings that raise the living standards of our customers and end-users.

Our team is passionate about creating your ideal house while curating healthy, peaceful, and meaningful living spaces for peaceful and meaningful lives. **Our properties, designed to fit a range of lifestyles, are located in Kathmandu's most desirable green and clean Budhanilkantha area, ensuring peaceful living with the marketplace and hospitals nearby.**

contact:

Nepal Home Search

email: Info@nepalhomesearch.com

Phone: 9841570333

www.nepalhomesearch.com

